



STRATEGIC PLAN

2019-2023

STRATEGY 1: INNOVATIVE ASSESSMENT

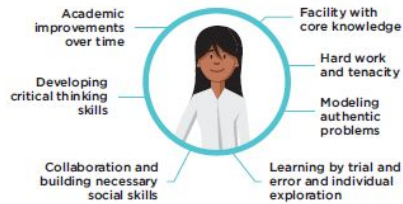
STRATEGY 2: SOCIAL EMOTIONAL LEARNING

STRATEGY 3: COGNITIVE SKILLS = COLLEGE & CAREER READY

STRATEGY 4: FLEXIBLE LEARNING SPACES

THE STEM 2026 VISION

INNOVATIVE MEASURES OF LEARNING



FLEXIBLE LEARNING SPACES



SOLVING RELEVANT GRAND CHALLENGES



ACCESSIBLE ACTIVITIES THAT INVITE PLAY & RISK



ENGAGED & NETWORKED COMMUNITIES OF PRACTICE



PROMOTING DIVERSITY



A strong STEM education—one that results in the skills and mindsets just described and opens the door for lifelong learning—starts as early as preschool, is culturally responsive, employs problem- and inquiry-based approaches, and engages students in hands-on activities that offer opportunities to interact with STEM professionals.

US Dept of Education: OFFICE OF Innovation and Improvement

Strategy: Provide innovative assessment, instruction, and feedback that promotes high academic achievement and expectations.

Results Statements:

- Increase student achievement through specific skill instruction in Chomp Time / Personalized Learning Time.
- Standards from 5-12 will be aligned and rigorous enough to prepare for college education.
- Increase the number of students meeting the PSAT and SAT benchmarks in Math and Evidence-Based Reading (EBR) and writing through the use of resources in and out of the classroom.
- Hold all students accountable to passing grades by providing the proper resources and supports.

Strategy: We will design and implement Social Emotional Learning (SEL) supports for students, staff and families.

Results Statements:

- Quest staff will have the knowledge and skills to implement effective SEL supports.
- Quest parents will have knowledge and skills to implement effective SEL supports.
- Students will receive SEL supports that are implemented by Quest Charter Academy from 5th-12th grade. Students will learn and/or maintain effective self management, self awareness, social awareness, relationship skills, and decision-making skills.

Strategy: We will design and implement school experiences that prepare students for college, careers and a fulfilled life.

Results Statements:

- Quest staff, students, families, and partners will understand the value of cognitive skill development and its role throughout the academic day.
- Quest staff will have the skills and understanding to implement Project-based learning.
- Quest students will have opportunities to develop cognitive skills while interacting with STEAM focused lessons.
- Quest students will have the skills ready to be successful in job related work experiences.

Strategy: We will restructure the school day to provide a set of more diverse learning experiences and flexible learning spaces for students.

Results Statements:

- Students will benefit social-emotionally and academically from a more diverse set of experiences.
- Students will improve academic performance through flexible use of technology.
- Improve the level of student focus, collaboration and productivity through flexible seating in core classrooms.
- Quest students will have the skills ready to be successful in job related work experiences.